

GRAND DESIGNS AUSTRALIA

40+
A-LIST
KITCHENS &
BATHROOMS

MODULAR BUILDING
WE DISCUSS THIS
GROWING TREND

INSIDE
A TOTALLY
TRANSFORMED
TERRACE



Life
Style.

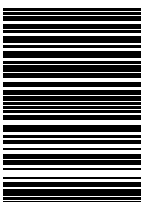
UNIVERSAL
MEDIACO

Issue 12.1
AUS\$11.50*
NZ\$12.99 (Incl. GST)

FAVOURITE FIVE
DINING TABLES

PITCH PERFECT

A Mornington Peninsula farmhouse like no other



ISSN: 2200 - 2197

9 772200 219001

A MODERN farmhouse

Tucked into the rolling hills of the picturesque Mornington Peninsula sits a farmhouse like no other

WORDS CARROL BAKER PHOTOGRAPHY TESS KELLY



ABOVE A Striking black kitchen sets the tone for entertaining in style



Stepping over the threshold of this spacious and modern home is like a warm hug. With plenty of style and charisma, it's a delightful welcoming dwelling.

It's a far cry from its original incarnation, a pitched-roof farmhouse that was constructed in the 1980s. Aaron Neighbour from Atlas Architects says the original house had turned its back on some of the best views in Victoria — particularly from the west. "Our clients wanted to insert a new dimension that embraced, celebrated and centred the view so that no matter where you are in the house, you are connected to nature," he says.

The semi-retired clients wanted a family home that would cater for extended family, where generations could gather together and connect with each other. Aaron says they desired a residence that was unapologetically for living. "A home where living areas are prioritised above all else, creating a space that welcomes family and encourages connection, reunion and shared experiences," he explains.

"OUR CLIENTS WANTED TO INSERT A NEW DIMENSION THAT EMBRACED, CELEBRATED AND CENTRED THE VIEW SO THAT NO MATTER WHERE YOU ARE IN THE HOUSE, YOU ARE CONNECTED TO NATURE"
— AARON NEIGHBOUR

DETAILS
HOUSE The Seat
LOCATION Mornington Peninsula, Vic





The project involved a renovation of the existing home and the addition of a large family room extension which incorporated a new kitchen, living and dining space. The existing building needed to be reskinned to create a new exterior appearance that melded flawlessly with the new living areas.

There were some challenges with the project. One was the roofline; in its existing format, Aaron described it as “a bit messy. We had to figure out a way to modify and evolve it without disturbing the buildings form.” A steel fascia pergola structure was constructed to envelop the existing building. It solved the issue, offered privacy, and created a northern courtyard.

The project was in some respects a balancing act — to create spaces that were open and also more intimate, where privacy was assured. The resulting home is now an artful fusion of minimalist and modern. The dark interior colour palette echoes a minimalist vibe. There is also an underlying premise that comfort is paramount. It’s still a farmhouse, and yet it is so much more.

Aaron says it’s highly adaptable and centred around family, utilising practical, honest materials in an elegant yet simple design. “It incorporates strong, bold structures that speak of the strength and angularity of the surrounding landscape, and draws on a

The beautiful light-filled spaces capture the leafy views beyond

EDITOR'S FAVOURITE

THE ELEGANT BOOKCASE THAT STRETCHES TO THE CATHEDRAL CEILING





BELOW A reading room that is in a class of its own



soothing charcoal palette that echoes the richness of the local loam soils, enveloping and calming those welcomed in," he enthuses.

Some organic and raw materials found in the project include a stone benchtop and fireplace, and also the bluestone crazy paving. This was chosen because the textured stone surface creates unity inside and out, between the old and the new, says Aaron. "It fosters an understanding that although modern and considered, this is not a precious building but a cosy, well-used home," he notes.

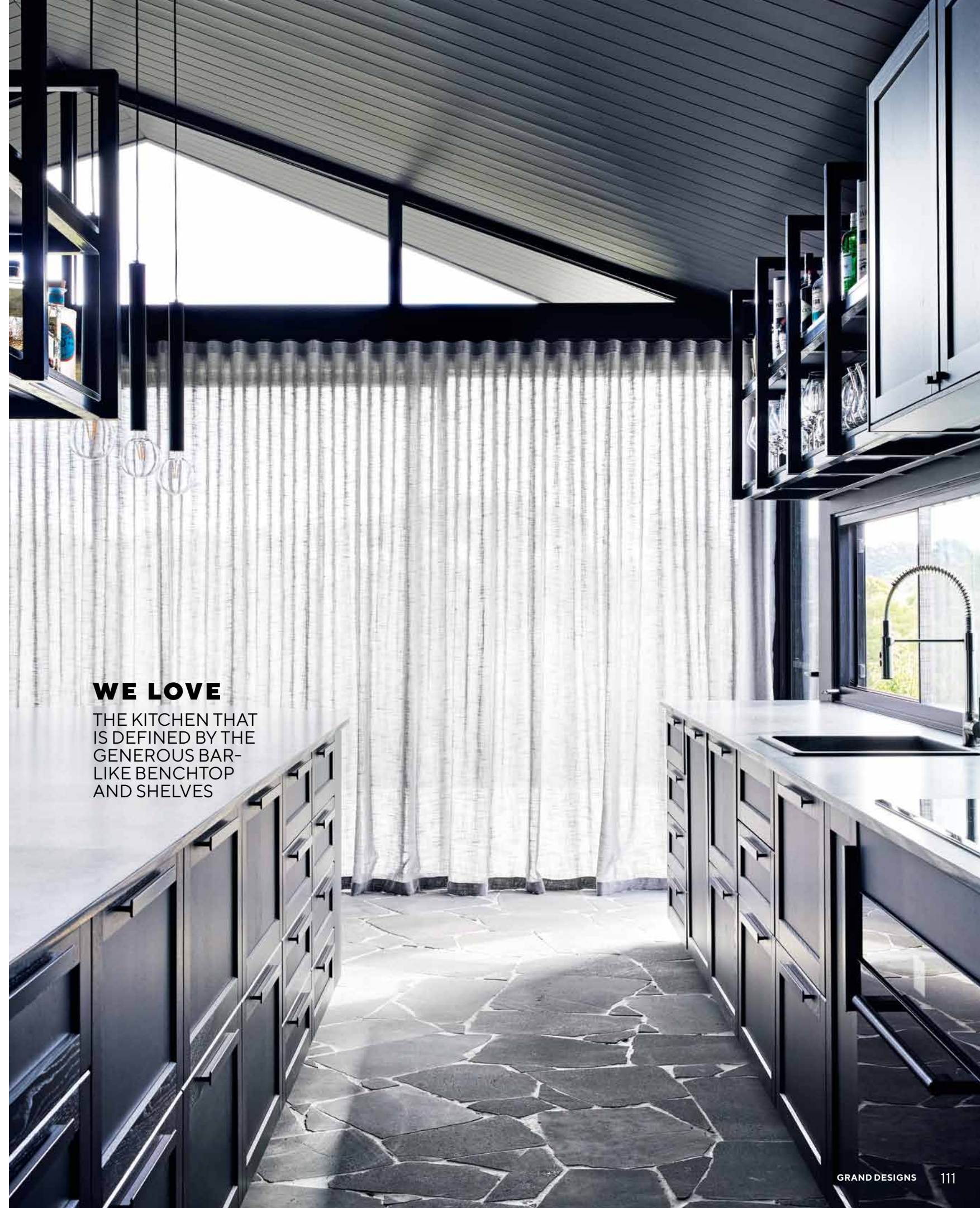
Creating a project such as The Seat was like a symphony in motion. Each and every element needed to work in harmony. Aaron says they worked extremely hard to create something that looks effortless. "Though the brief was multifaceted, our key driver was to blur the line between old and new, between inside and out, between simplicity and complexity," he says. As a result, each facet of the project was meticulously discussed, examined, tested, and

if it fitted like a seamless piece of the puzzle, it was implemented. If it did not, it was back to the drawing board — good enough was never on the table.

Given its location, a sense of connectedness with nature was important, and not just the views. In the courtyard, plants will grow over the coming seasons, furthering that organic connection. The social and entertaining hub has a "gentleman's club" aesthetic. It's refined and handsome, warm and welcoming — the perfect place to entertain.

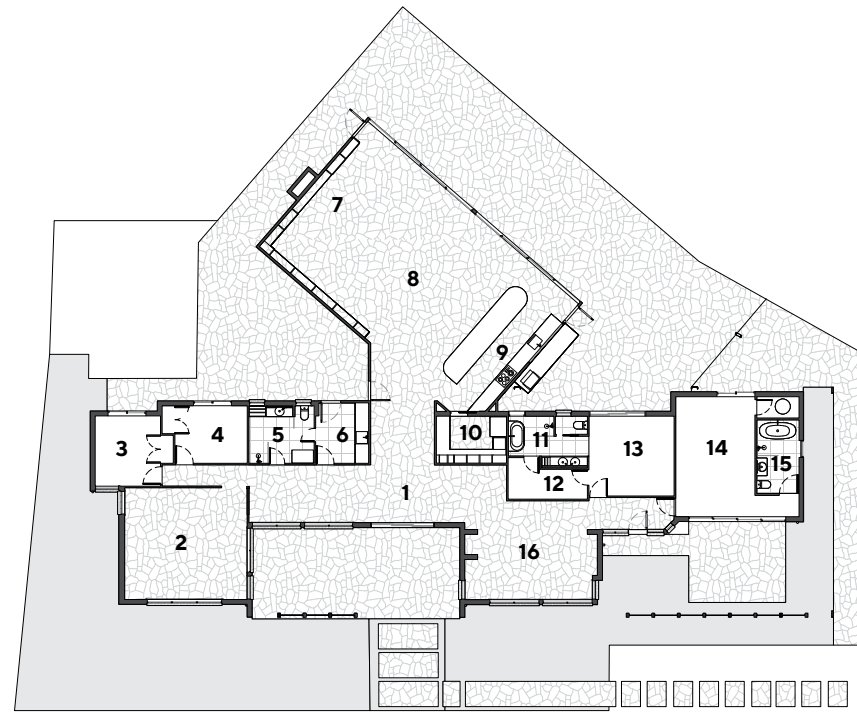
Aaron says, at its very heart, this project was really about how we allow architecture to truly integrate with the landscape. "People forget how important this is," he muses. "In The Seat, the landscape flows effortlessly, fluidly into and through the building and becomes the focal point, the nucleus connecting all elements; the dark interior creates a dramatic yet unpretentious stage for nature." ♣

THE RESULTING HOME IS NOW AN ARTFUL FUSION OF MINIMALIST AND MODERN



WE LOVE

THE KITCHEN THAT IS DEFINED BY THE GENEROUS BAR-LIKE BENCHTOP AND SHELVES



GROUND FLOOR PLAN

LEGEND

- 1 Entry
- 2 Rumpus
- 3 Bedroom 3
- 4 Bedroom 2
- 5 Bathroom
- 6 Laundry
- 7 Living room
- 8 Dining room
- 9 Kitchen
- 10 Pantry
- 11 Ensuite
- 12 Walk-in robe
- 13 Bedroom 1
- 14 Workshop
- 15 Bathroom
- 16 Lounge



PROJECT TEAM

ARCHITECT Atlas Architects,
atlasarchitects.com.au

STRUCTURAL TEAM

Windows Rylock Windows & Doors
Engineer Vayco Structures
Building surveyor Red Textas

FURNITURE & FURNISHINGS

Couches ARNE by Antonio Citterio
Stools Vela
Dining table Mark Tuckey
Table Gianfranco
Coffee table Patricia Urquiola
Chairs Thomas armchair
Stone and tiles Zimbabwe Black Corsi & Nicolai
Rug and carpet Carpet World
Bookcase joinery Polytec
Wall and ceiling paint Resene

FIXTURES & FITTINGS

Door hardware Designer Doorware
Fireplace Jetmaster
Rangehood Smeg
Oven ILVE
Cooktop Bosch



RIGHT The exterior living spaces rival those of the indoors